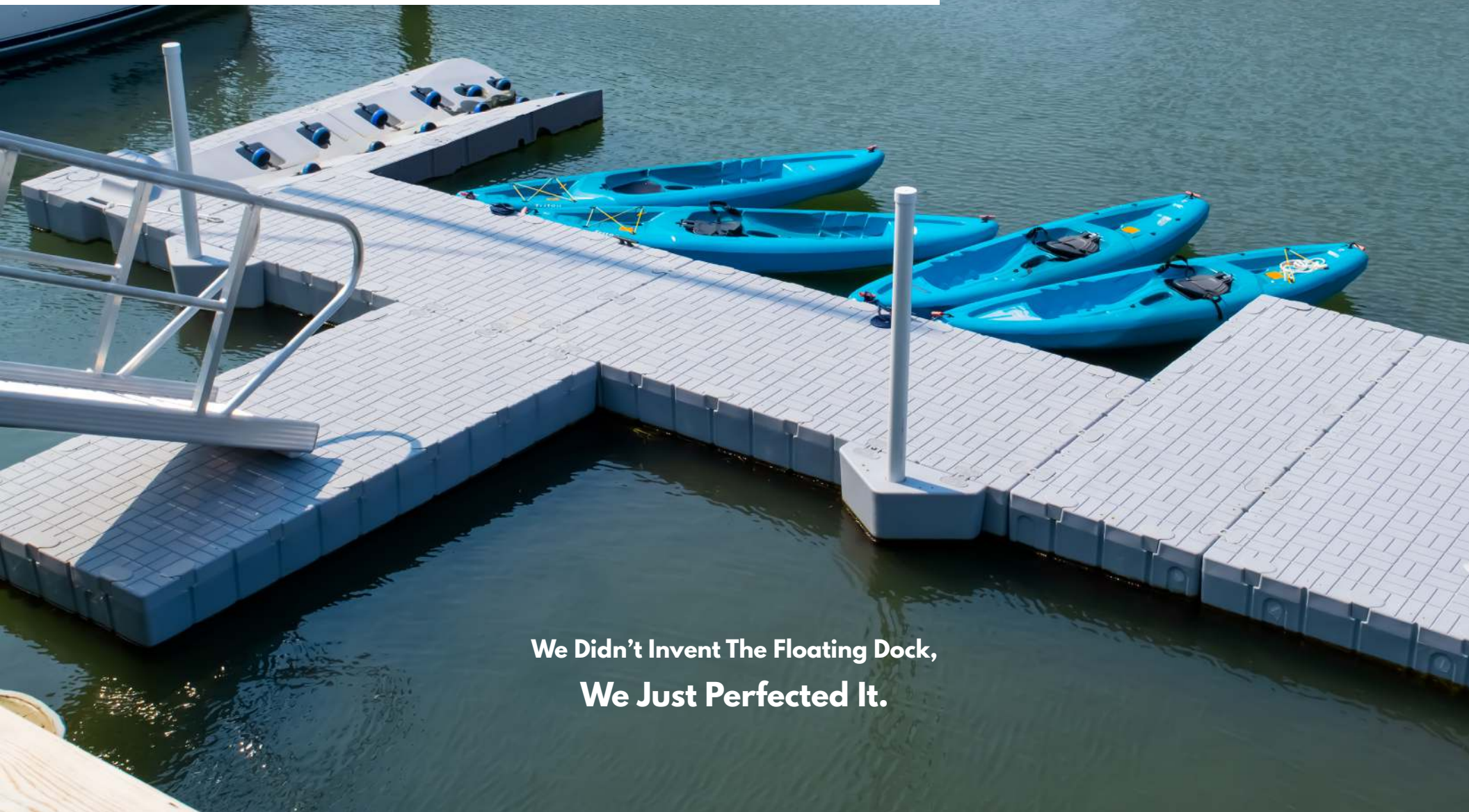




2023 Brochure



**We Didn't Invent The Floating Dock,
We Just Perfected It.**



OUR STORY

Snap Dock's story began in 1982 when our parent company first patented a rotationally molded collapsible container, quickly becoming the standard for the automotive and manufacturing industries. The company later expanded into other rotationally molded products that serve the industrial market. Along the way, we saw an unmet need for an industrial floating walkway system that could be rapidly deployed. In 2018, Snap Dock rolled out a polyethylene floating walkway into the industrial market. After finding success with that product, we began developing a recreational lineup according to the same core tenets of durability and ease of use, launched in 2021.



DESIGNED WITH YOU IN MIND

Versatility

Snap Dock's floating dock system seamlessly transitions between residential, commercial, and industrial applications, including marinas, restaurants, campgrounds, resorts, and boat rental facilities. Regardless of the project, Snap Dock has you covered.

Built to Last

Snap Dock floats are rotationally molded from linear low-density polyethylene (LLDPE) backed by an 8-year limited warranty. Given that Snap Dock's first customers were industrial operators, you can rest assured that Snap Dock's products are built to withstand the harshest conditions.

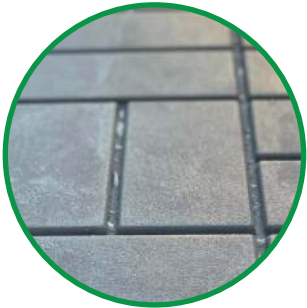
Low Maintenance

Snap Dock products require less maintenance than a traditional wood dock system. Due to the unique paver pattern surface that will channel water, and light gray color that hides dirt, the system will maintain its high-end appearance longer.

Easy to Configure

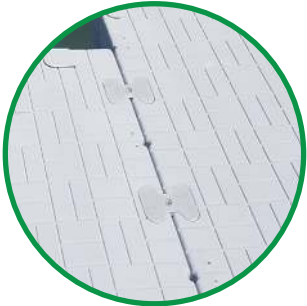
Unlike traditional systems and even other plastic floating dock products, Snap Dock's connection system makes installation quick and straightforward. It can even be done on the water using our installation tool.

THE SNAP DOCK ADVANTAGE



Attractive Non-Slip Surface

All dock sections feature an attractive non-slip surface to ensure safe and enjoyable use for years.



Seamless Color Integration

Snap Dock's coupler system matches the color of the dock components.



Industrial-Grade Durability

All Snap Dock modular components are produced with industrial-grade plastic (LLDPE), ensuring consistent performance in the most extreme weather conditions.



Unmatched Strength

SnapDock's coupler system allows our docks to withstand significant wave action in rough water.



Reinforced Surface Support

Snap Dock components are engineered to reduce deflection on the walking surface.



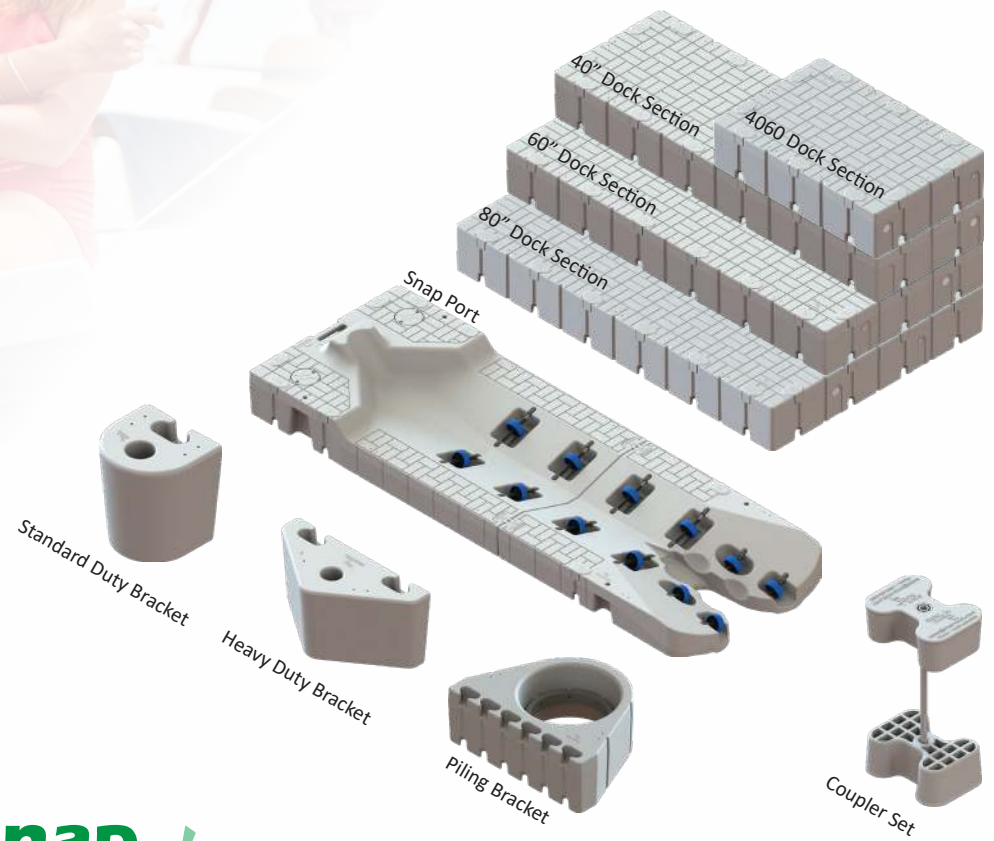
Customer Experience

We are committed to creating a family-like customer experience for distributors, dealers and end-users.



THE CORE OF THE SYSTEM

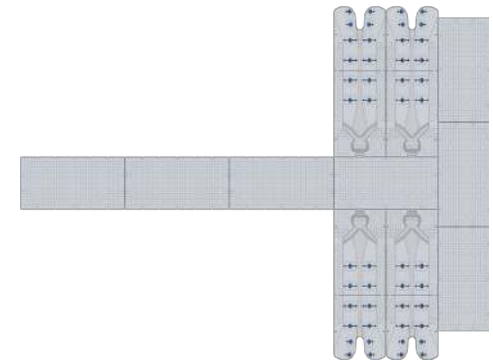
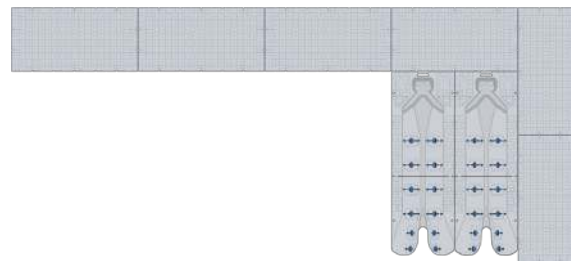
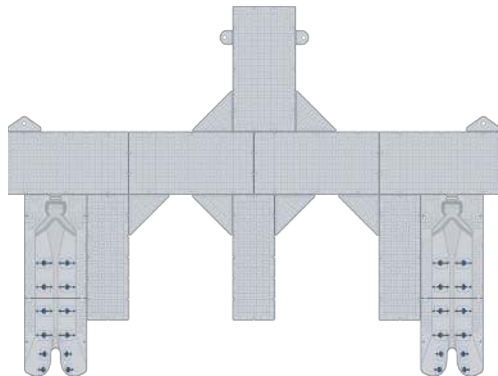
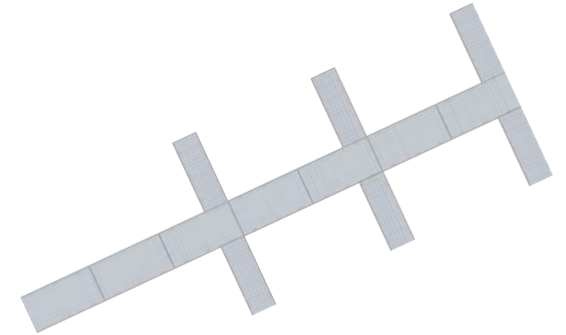
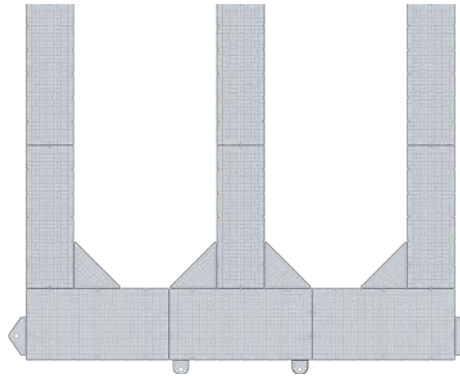
The center of the most advanced floating dock system is our set of best-in-class components that provide unsurpassed quality, functionality, and durability.



ENDLESS POSSIBILITIES

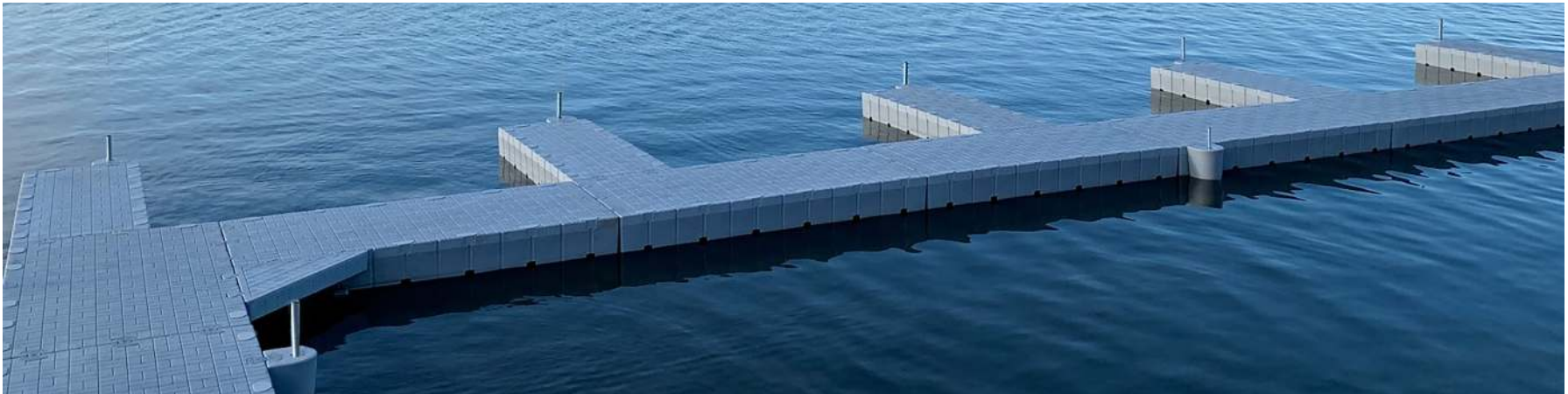
Regardless of the type of project, the Modular Snap Dock System was designed to be configured in countless ways allowing for endless possibilities!

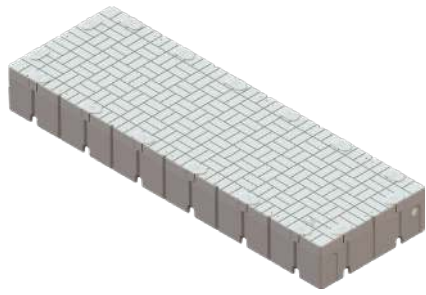
Please visit: [Snap Dock Builder](#) to start designing your own layout today!



DOCK SECTIONS

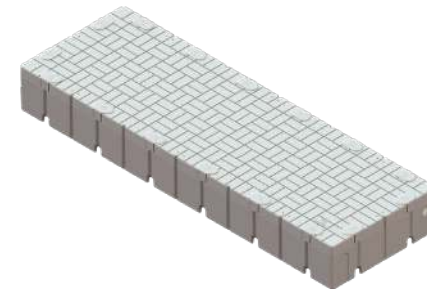
Snap Dock's sections are made from rotationally molded industrial grade plastic (LLDPE) with UV inhibitors to ensure consistent performance in the most extreme weather conditions as well as stand the test of time. In addition, each dock section features an attractive non-slip surface for years of enjoyable use as well as reinforced surface support to deliver uniform support across the every inch of each dock section.





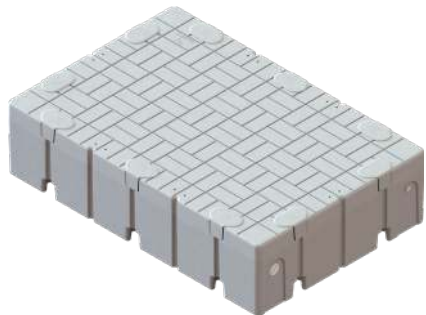
40" Dock Section

Buoyancy (Per Module)	2150 lbs./ 975 kgs.
Weight	178 lbs/ 81 kgs.
Dimensions	117" x 39" x 15"
SKU	SNAP120x40-GR
Color	Light Gray



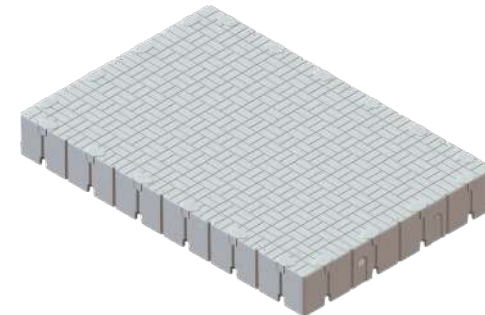
60" Dock Section

Buoyancy (Per Module)	3150 lbs./ 1440 kgs.
Weight	270 lbs/ 122 kgs.
Dimensions	117" x 59" x 15"
SKU	SNAP120x60-GR 2020
Color	Light Gray



4060 Dock Section

Buoyancy (Per Module)	997 lbs./ 453 kgs.
Weight	119 lbs/ 54 kgs.
Dimensions	59" x 39" x 15"
SKU	SNAP60x40-GR
Color	Light Gray



80" Dock Section

Buoyancy (Per Module)	4224 lbs./ 1916 kgs.
Weight	330 lbs/ 150 kgs.
Dimensions	117" x 79" x 15"
SKU	SNAP120x80-GR
Color	Light Gray



SNAP PORT



Snap Port

Buoyancy (Per Module)	1750 lbs./ 794 kgs.
Weight	370 lbs/ 168 kgs.
Dimensions	168" x 59" x 15"
SKU	SNAP-PORT-ASSY-GR
Color	Light Gray

The Snap Port is the perfect solution for residential and commercial customers who want easy access to their jet skis and also want to protect them. Snap Dock's Drive on PWC port accomplishes this with several advanced features, including a split entry with dual adjustable rollers for easy docking and launching, a built-in bow stop and a two-piece design that allows for a smoother entry and exit.

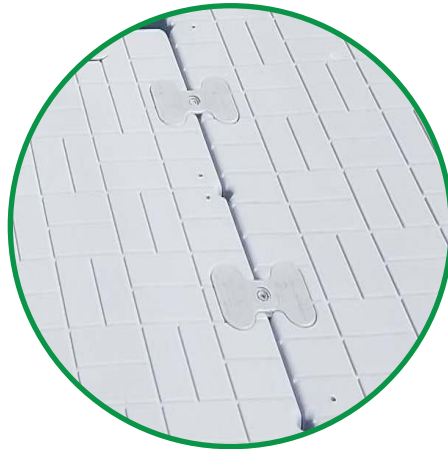
Customers can install our ports with other existing floating or fixed dock systems, connected to our dock system, or as a stand-alone system.



COUPLER SYSTEM

Snap Dock's patent-pending coupler system uses durable rubber composites, making each coupler strong, flexible, and lightweight. This unique combination ensures our docks will perform well in the most extreme weather conditions. In addition, the coupler system enhances the overall aesthetics of any dock by blending in with the dock sections and components.

Color Matched Coupler System



Coupler Set



Male Half Coupler



Female Half Coupler



ANCHOR SYSTEMS

Product Name	SKU
Standard Duty Pipe Bracket	STD-BRKT-GR-ASSY
Heavy Duty Pipe Bracket	HD-BRKT-GR-ASSY
Piling Bracket	PIL-BRKT-GR-ASSY

**Standard Duty
Pipe Bracket**



**Heavy Duty
Pipe Bracket**



Piling Bracket



ANCHOR SYSTEM CONTINTUES...

Item #	Product Name	SKU
1	Galvanized Hinge Kit	HINGE-KIT-GALV
2	Universal Galvanized Hinge Kit	HINGE-KIT-GALV-U
3	Extended Galvanized Hinge Kit	HINGE-KIT-GALV-XL
4	Stainless Steel Hinge Kit	HINGE-KIT-GALV-SS
5	Universal Stainless Steel Hinge Kit	HINGE-KIT-GALV-SS-U

Note: Half Couplers are sold separately.



#1



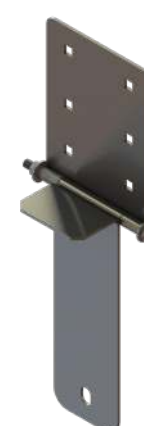
#2



#3



#4



#5



ANCHOR SYSTEM CONTINTUES...

Product Name	SKUs
Standard Duty Galvanized Deadweight Bracket	ANCR
Heavy Duty Galvanized Deadweight Pipe Bracket	ANCR-PIPE
Stiff Arm Bracket	STIF-ASSY
Z Standoff Bracket	SO Z BRKT
Male Half Coupler	HALFCPLR-GR-ASSY
Female Half Coupler	HALFCPLR-F-GR-ASSY

* Half Couplers are sold separately *

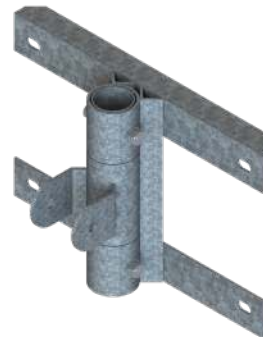
**Standard Duty
Deadweight Bracket**



**Heavy Duty
Deadweight Bracket**



Stiff Arm Bracket



Z Standoff Bracket



Contact Information

11405 N. Pennsylvania Street, Suite 106,

Carmel, IN, 46032

United States of America

Phone: 1 (800) 483-5205

Email: sales@snapdock.com

